

CERTIFICATE OF ANALYSIS

ROSE FLOWERS

Batch No.: P404451

Analysis Description	Result	Compliance
Appearance	Dried flower petals	Pass
Colour	Red	Pass
Odour	Characteristic Roses	Pass

Shelf life of this product depends very much on storage conditions, particularly temperature and exposure to light and air.

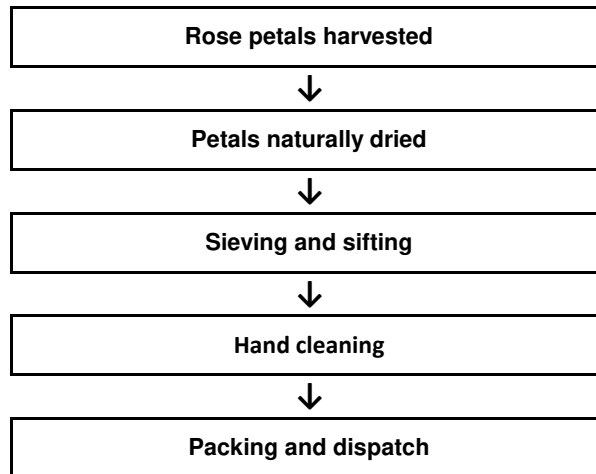
Expiry date must be considered as subjective; the expiry date given here is based on the best of our knowledge and experience of the material when stored under recommended conditions in original unopened containers.

Due to the natural ingredients contained in many of our products, there may be a slight batch to batch variation in the colour, odour or consistency. However, we ensure that this does not affect the quality and efficacy of the products in any way.

We hereby certify that the above material meets the required specification and is released for free sale.

PRODUCTION FLOW CHART

ROSE FLOWERS



Revision Date: 11/05/2017

Revision: 0

SAFETY DATA SHEET ROSE FLOWERS

SECTION 1: IDENTIFICATION OF THE SUBSTANCE/MIXTURE AND OF THE COMPANY/UNDERTAKING

1.1. Product identifier

Product name	ROSE FLOWERS
Chemical name	DEFINITION/BOTANICAL ORIGIN: Rosa centifolia Flower is the plant material obtained from the dried flowers (petals) of the Cabbage Rose, Rosa centifolia (L.), Rosaceae.
Product Code.	BOTAROSE
Synonyms, Trade Names	INCI Name: Rosa centifolia Flower
CAS-No.	84604-12-6
EC No.	283-289-8

1.2. Relevant identified uses of the substance or mixture and uses advised against

1.3. Details of the supplier of the safety data sheet

Supplier	YouWish Transistorstraat 91-02 1322CL Almere The Netherlands www.youwish.nl
----------	---

1.4. Emergency telephone number

+31 6 83295085 Office Hours are 9-5 weekdays only

SECTION 2: HAZARDS IDENTIFICATION

2.1. Classification of the substance or mixture

Classification (EC 1272/2008)	Physical and Chemical Hazards	Not classified.
	Human health	Not classified.
	Environment	Not classified.

Classification (67/548/EEC) Not classified.

The Full Text for all R-Phrases and Hazard Statements are Displayed in Section 16.

2.2. Label elements

EC No. 283-289-8
Label In Accordance With (EC) No. 1272/2008
No pictogram required.

2.3. Other hazards

SECTION 3: COMPOSITION/INFORMATION ON INGREDIENTS

3.1. Substances

Product name	ROSE PETALS RED
CAS-No.	84604-12-6
EC No.	283-289-8

ROSE FLOWERS

SECTION 4: FIRST AID MEASURES

4.1. Description of first aid measures

General information

Remove affected person from source of contamination. Perform artificial respiration if breathing has stopped.

Inhalation

Move the exposed person to fresh air at once. Get medical attention if any discomfort continues.

Ingestion

Immediately rinse mouth and provide fresh air. Get medical attention if any discomfort continues.

Skin contact

If necessary remove contaminated clothing and wash skin with soap and water. Get medical attention if any discomfort continues.

Eye contact

Immediately flush with plenty of water for up to 15 minutes. Remove any contact lenses and open eyes wide apart. Get medical attention if any discomfort continues.

4.2. Most important symptoms and effects, both acute and delayed

4.3. Indication of any immediate medical attention and special treatment needed

No specific first aid measures noted.

SECTION 5: FIREFIGHTING MEASURES

5.1. Extinguishing media

Extinguishing media

Fire can be extinguished using: Foam, carbon dioxide or dry powder.

5.2. Special hazards arising from the substance or mixture

Unusual Fire & Explosion Hazards

Fine dust dispersed in air in sufficient concentrations and in the presence of an ignition source is a potential dust explosion hazard.

Specific hazards

When heated and in case of fire, toxic vapours/gases may be formed.

5.3. Advice for firefighters

Special Fire Fighting Procedures

Containers close to fire should be removed immediately or cooled with water.

Protective equipment for fire-fighters

Self contained breathing apparatus and full protective clothing must be worn in case of fire.

SECTION 6: ACCIDENTAL RELEASE MEASURES

6.1. Personal precautions, protective equipment and emergency procedures

Use protective gloves, goggles and suitable protective clothing.

6.2. Environmental precautions

Do not discharge into drains, water courses or onto the ground.

6.3. Methods and material for containment and cleaning up

Avoid generation and spreading of dust. Shovel into dry containers. Cover and move the containers. Flush the area with water.

6.4. Reference to other sections

SECTION 7: HANDLING AND STORAGE

7.1. Precautions for safe handling

Avoid spilling, skin and eye contact. Avoid handling which leads to dust formation. Ensure adequate ventilation of the working area. Adopt best manual handling considerations when handling, carrying and dispensing.

ROSE FLOWERS

7.2. Conditions for safe storage, including any incompatibilities

Store in tightly closed original container in a dry, cool and well-ventilated place. Keep away from heat, sparks and open flame. Protect from freezing and direct sunlight.

Storage Class

Unspecified storage.

7.3. Specific end use(s)

SECTION 8: EXPOSURE CONTROLS/PERSONAL PROTECTION

8.1. Control parameters

8.2. Exposure controls

Protective equipment



Engineering measures

Provide adequate ventilation. Observe occupational exposure limits and minimize the risk of inhalation of dust.

Respiratory equipment

No specific recommendation made, but respiratory protection may still be required under exceptional circumstances when excessive air contamination exists.

Hand protection

Use suitable protective gloves if risk of skin contact.

Eye protection

Wear approved safety goggles.

Other Protection

Wear appropriate clothing to prevent any possibility of skin contact.

Hygiene measures

No specific hygiene procedures noted, but good personal hygiene practices are always advisable, especially when working with chemicals.

Skin protection

Wear apron or protective clothing in case of contact.

SECTION 9: PHYSICAL AND CHEMICAL PROPERTIES

9.1. Information on basic physical and chemical properties

Appearance	Dried petals
Colour	Red.
Odour	Characteristic.

9.2. Other information

SECTION 10: STABILITY AND REACTIVITY

10.1. Reactivity

10.2. Chemical stability

Stable under normal temperature conditions.

10.3. Possibility of hazardous reactions

Hazardous Polymerisation

Will not polymerise.

10.4. Conditions to avoid

Avoid heat, flames and other sources of ignition.

ROSE FLOWERS

10.5. Incompatible materials

Materials To Avoid

Strong oxidising substances. Strong acids. Strong alkalis.

10.6. Hazardous decomposition products

In case of fire, toxic gases (CO, CO₂, NO_x) may be formed.

SECTION 11: TOXICOLOGICAL INFORMATION

11.1. Information on toxicological effects

Toxicological information

See section-2

General information

No specific health warnings noted.

Inhalation

Dust in high concentrations may irritate the respiratory system.

Ingestion

May cause discomfort if swallowed.

Skin contact

Powder may irritate skin.

Eye contact

Particles in the eyes may cause irritation and smarting.

Health Warnings

No specific health warnings noted.

Medical Symptoms

No specific symptoms noted, but this chemical may still have adverse health impact, either in general or on certain individuals.

Medical Considerations

Persons with rash are directed to skin expert for examination of allergic eczema.

SECTION 12: ECOLOGICAL INFORMATION

Ecotoxicity

Refer to section-2

12.1. Toxicity

12.2. Persistence and degradability

12.3. Bioaccumulative potential

12.4. Mobility in soil

12.5. Results of PBT and vPvB assessment

12.6. Other adverse effects

SECTION 13: DISPOSAL CONSIDERATIONS

General information

Waste is suitable for incineration.

ROSE FLOWERS

13.1. Waste treatment methods

Dispose of waste and residues in accordance with local authority requirements.

SECTION 14: TRANSPORT INFORMATION

General	The product is not covered by international regulation on the transport of dangerous goods (IMDG, IATA, ADR/RID).
---------	---

14.1. UN number

14.2. UN proper shipping name

14.3. Transport hazard class(es)

14.4. Packing group

14.5. Environmental hazards

14.6. Special precautions for user

14.7. Transport in bulk according to Annex II of MARPOL73/78 and the IBC Code

SECTION 15: REGULATORY INFORMATION

15.1. Safety, health and environmental regulations/legislation specific for the substance or mixture

Statutory Instruments

The Chemicals (Hazard Information and Packaging for Supply) Regulations 2009 (S.I 2009 No. 716).

Approved Code Of Practice

Classification and Labelling of Substances and Preparations Dangerous for Supply. Safety Data Sheets for Substances and Preparations.

Guidance Notes

Workplace Exposure Limits EH40. CHIP for everyone HSG(108).

EU Legislation

Regulation (EC) No 1907/2006 of the European Parliament and of the Council of 18 December 2006 concerning the Registration, Evaluation, Authorisation and Restriction of Chemicals (REACH), establishing a European Chemicals Agency, amending Directive 1999/45/EC and repealing Council Regulation (EEC) No 793/93 and Commission Regulation (EC) No 1488/94 as well as Council Directive 76/769/EEC and Commission Directives 91/155/EEC, 93/67/EEC, 93/105/EC and 2000/21/EC, including amendments.

15.2. Chemical Safety Assessment

SECTION 16: OTHER INFORMATION

Issued By	Regulatory Manager
-----------	--------------------

Revision Date	22/01/2014
---------------	------------

Revision	2
----------	---

Risk Phrases In Full

NC	Not classified.
----	-----------------

Hazard Statements In Full

PESTICIDES STATEMENT

ROSE FLOWERS

Our suppliers have confirmed that the above product supplied by YouWish has potentially been treated with the following pesticides/chemicals when there has been a need to do so:

- Bifenthrin
- Piperonyl butoxide
- Kerosene
- Karate/Lorsban brand insecticides containing <40% Chlorpyrifos

Other pesticides may also have been used if necessary.

MATERIAL SPECIFICATION

ROSE FLOWERS

Analysis Description	Description
Appearance	Dried flower petals
Colour	Red
Odour	Characteristic Roses

Issue Date: 15/02/18

Shelf Life: 36 Months,

Revision: 1

Revision Date: 15/02/18

Shelf life of this product depends very much on storage conditions, particularly temperature and exposure to light and air. Shelf life must be considered as subjective; the shelf life given here is based on the best of our knowledge and experience of the material when stored under recommended conditions, see SDS, in original unopened containers. Due to the natural ingredients contained in many of our products, there may be a slight batch to batch variation in the colour, odour or consistency. However, we ensure that this does not affect the quality and efficacy of the products in any way.

DATA SHEET

ROSE PETALS RED

INCI name:	Rosa Centifolia Flower
Synonyms:	Provence rose, cabbage rose or Rose de Mai
Country of Origin:	Pakistan
CAS Number:	84604-12-6
EC Number:	283-289-8
Status:	100% Pure & Natural



General Description

Individual plants are shrubby in appearance, growing to 1.5–2 m tall, with long drooping canes and greyish green pinnate leaves with 5-7 leaflets. The flowers are round and globular, with numerous thin overlapping petals that are highly scented; they are usually pink, less often white to dark red-purple.

Rosa Centifolia Flower is the plant material obtained from the dried flowers of the Cabbage Rose, *Rosa centifolia* (L.), Rosaceae.

Common Uses/Applications

- Decorative component in cosmetic products.
- Herbal remedies.

Aromatherapy Actions/Uses

- Considered to have the following properties: Astringent, anti-inflammatory, aphrodisiac, sedative & anti-depressant.
- Regarded to be helpful for: Chapped lips & dry skin. Sore throat and bladder infections if boiled in water to make a tea.

Animal Non-Testing Declaration

YouWish has never been involved in animal testing or retesting for any of its products, nor has it sanctioned any third party to conduct such testing.

Transmissible/ Bovine Spongiform Encephalopathy (T.S.E/B.S.E)

This product does not contain, and is not derived from, specified risk material as defined in Commission Decision 97/534/EC or mechanically recovered meat obtained from the vertebral column of bovine, ovine or caprine animals. During production, storage and transport there is no contact with any extracts of animal (cattle, sheep, goat etc) origin and a cross contamination is excluded.

Product is therefore free from Bovine Spongiform Encephalopathy (BSE) and Transmissible Spongiform Encephalopathy (TSE).

Statement on Genetically Modified Organisms

We confirm to the best of our knowledge that this product does not contain nor has been produced with the aid of any genetically modified organism. In consequence, this product will not contain any detectable residues of protein or DNA resultant from genetic modification.

The data provided in this document is meant to represent anecdotal, typical data and information for this product and is correct to the best of our knowledge. The data was obtained from current and reliable sources, but is supplied without warranty, expressed or implied, regarding its correctness or accuracy. It is the user's responsibility to determine safe conditions for the use of this product, and to assume liability for loss, injury, damage or expense arising from improper use of this product. The information provided does not constitute a contract to supply to any specification, or for any given application, and buyers should seek to verify their requirements and product use.

Revision Date: 01/03/2016

Revision: 0

STATEMENT ON VEGAN SUITABILITY

ROSE FLOWERS

We confirm to the best of our knowledge that the above product sold by MYouWish does not contain any animal substances.

During production, storage and transport there is no contact with any extracts of animal origin.

We therefore declare that the product is suitable for vegans.