

# Product Datasheet

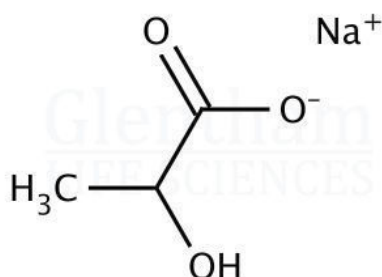
## GL8384 - Sodium DL-lactate, 60% solution

### Product Details

Product Name	Sodium DL-lactate, 60% solution
Glenthams Code	GL8384
CAS Number	72-17-3
EINECS	200-772-0
MDL Number	MFCD00065400
Additional CAS	312-85-6
PubChem SID	310280093
Related Categories	Buffers

### Structure

Molecular Weight	: 112.06
Molecular Formula	: $C_3H_5NaO_3$



### Glenthams Product Specification

Physical Description	: Clear, colourless to light-yellow viscous liquid
Identification	: Sodium, Lactate according to USP
pH	: 5.0 - 9.0
Chloride (Cl)	: ≤ 0.05%
Sulphate (SO <sub>4</sub> )	: To pass test
Citrate, Oxalate, Phosphate or Tartrate	: To pass test
Methanol and Methyl Esters	: ≤ 0.025%
Heavy Metals	: ≤ 10ppm
Sugars	: To pass test
Assay	: 58.8 - 61.2 % (w/w)
Pharmacopoeia Specification(s)	: USP
Version	: v1.1

### About Sodium DL-lactate, 60% solution

No further details on record.

### Storage

Recommended storage temperature: +4°C.

### Hazards and Transport

Not classified as hazardous under CLP.  
Not classified as dangerous for transport.

# CERTIFICATE OF ANALYSIS

Product Description	Batch	Re-Test Date	Customer Reference
SODIUM LACTATE 60%	5142436	10/2025	

PARAMETERS	SPECIFICATION	RESULTS
<b>Colour and Appearance:</b>	Colourless to light yellow liquid	Comparable to standard
<b>Odour:</b>	Characteristic	Comparable to standard
<b>Specific Gravity @ 20°C:</b>	1.260 - 1.340	1.287
<b>Viscosity in mPa.s @ 20°C:</b>	80 - 160Ccps	146cps
<b>pH (20% Solution) @ 20°C:</b>	6.5 - 7.5	7.02
<b>Assay</b>	59.0 - 61.0 %	60.0%
<b>Stereochemical purity (L-isomer)</b>	min. 97 %	99.1%
<b>Sodium content</b>	12.1 – 12.6 %	12.3%
<b>Acidity (as lactic acid)</b>	max. 0.3 % w/w	Conforms
<b>Chloride</b>	max. 50 mg/kg	Conforms
<b>Sulphate</b>	max. 20 mg/kg	Conforms
<b>Cyanide</b>	max. 0.3 mg/kg	Conforms
<b>Iron</b>	max. 10 mg/kg	Conforms
<b>Arsenic</b>	max. 1 mg/kg	Conforms
<b>Lead</b>	max. 2 mg/kg	Conforms
<b>Mercury</b>	max. 1 mg/kg	Conforms
<b>Heavy metals (as Pb)</b>	max. 5 mg/kg	Conforms

## DISCLAIMER

YouWish shall not be held liable for any damage resulting from handling, application or processing of our ingredients, since the conditions of use are out of our control. Information provided by YouWish, including the composition or use of our ingredients, are provided in good faith, based on current technical and scientific knowledge, but without any warranty as to their accuracy or completeness.

YouWish hereby disclaim any warranty of suitability of our ingredients, alone or in combination with other products, nor to the information and suggestions that we are providing in respect to the intellectual property rights of third parties. Any person relying on the information and suggestions that we are providing shall do so at their own risk and we will accept no liability whatsoever with respect to them.

Any user of our ingredients shall themselves determine the suitability of our ingredients for their own intended use and as may be the case, obtain the required regulatory approvals for the commercialization of their finished products.

Any person using our ingredients in the formulation of their own finished products are solely responsible for ensuring that the use of our ingredients, the finished products, the packaging, labelling and any claims they make with respect to their finished products and the ingredients they contain, comply with their country/state/regional applicable laws and regulations.

# SAFETY DATA SHEET

according to Regulation UK SI 2019/758 and UK SI 2020/1577 as amended

Creation Date 12-May-2011

Revision Date 20-Oct-2023

Revision Number 5

## SECTION 1: IDENTIFICATION OF THE SUBSTANCE/MIXTURE AND OF THE COMPANY/UNDERTAKING

### 1.1. Product identifier

Product Description:	<b>Sodium lactate solution about 60% w/w</b>
Cat No. :	<b>S/5161/08, S/5161/25</b>
Synonyms	Sodium DL-lactate; DL-Lactic acid sodium salt; Propanoic acid, 2-hydroxy-, monosodium salt
Molecular Formula	C3H5NaO3

### 1.2. Relevant identified uses of the substance or mixture and uses advised against

Recommended Use	Laboratory chemicals.
Uses advised against	No Information available

### 1.3. Details of the supplier of the safety data sheet

Company	<b>Youwish</b>
	Transistorstraat 91-021, 322CL, Almere,
	The Netherlands
	www.youwish.nl
	+31 36 2036384

E-mail address	contact@youwish.nl
	Tel: 01509 231166
1.4. Emergency telephone number	Chemtrec US: (800) 424-9300
	Chemtrec EU: 001-703-527-3887

## SECTION 2: HAZARDS IDENTIFICATION

### 2.1. Classification of the substance or mixture

#### **CLP Classification - According to GB-CLP Regulations UK SI 2019/720 and UK SI 2020/1567**

##### **Physical hazards**

Based on available data, the classification criteria are not met

##### **Health hazards**

Based on available data, the classification criteria are not met

# SAFETY DATA SHEET

Sodium lactate solution about 60% w/w

Revision Date 20-Oct-2023

## Environmental hazards

Based on available data, the classification criteria are not met

Full text of Hazard Statements: see section 16

## 2.2. Label elements

None required

## 2.3. Other hazards

None known

Toxic to terrestrial vertebrates

This product does not contain any known or suspected endocrine disruptors

## SECTION 3: COMPOSITION/INFORMATION ON INGREDIENTS

### 3.2. Mixtures

Component	CAS No	EC No	Weight %	CLP Classification - According to GB-CLP Regulations UK SI 2019/720 and UK SI 2020/1567
Propanoic acid, 2-hydroxy-, monosodium salt	72-17-3	EEC No. 200-772-0	60	-
Water	7732-18-5	231-791-2	40	-

Full text of Hazard Statements: see section 16

## SECTION 4: FIRST AID MEASURES

### 4.1. Description of first aid measures

<b>Eye Contact</b>	Rinse immediately with plenty of water, also under the eyelids, for at least 15 minutes. Get medical attention.
<b>Skin Contact</b>	Wash off immediately with plenty of water for at least 15 minutes. Get medical attention immediately if symptoms occur.
<b>Ingestion</b>	Clean mouth with water and drink afterwards plenty of water. Get medical attention if symptoms occur.
<b>Inhalation</b>	Remove to fresh air. Get medical attention immediately if symptoms occur.
<b>Self-Protection of the First Aider</b>	No special precautions required.

### 4.2. Most important symptoms and effects, both acute and delayed

# SAFETY DATA SHEET

Sodium lactate solution about 60% w/w

Revision Date 20-Oct-2023

None reasonably foreseeable.

## **4.3. Indication of any immediate medical attention and special treatment needed**

Notes to Physician

Treat symptomatically.

## **SECTION 5: FIREFIGHTING MEASURES**

### **5.1. Extinguishing media**

#### **Suitable Extinguishing Media**

Use extinguishing measures that are appropriate to local circumstances and the surrounding environment. Water spray, carbon dioxide (CO<sub>2</sub>), dry chemical, alcohol-resistant foam.

#### **Extinguishing media which must not be used for safety reasons**

No information available.

### **5.2. Special hazards arising from the substance or mixture**

Keep product and empty container away from heat and sources of ignition. Thermal decomposition can lead to release of irritating gases and vapors.

#### **Hazardous Combustion Products**

Sodium oxides, Carbon monoxide (CO), Carbon dioxide (CO<sub>2</sub>).

### **5.3. Advice for firefighters**

As in any fire, wear self-contained breathing apparatus pressure-demand, MSHA/NIOSH (approved or equivalent) and full protective gear.

## **SECTION 6: ACCIDENTAL RELEASE MEASURES**

### **6.1. Personal precautions, protective equipment and emergency procedures**

Ensure adequate ventilation. Use personal protective equipment as required.

### **6.2. Environmental precautions**

Should not be released into the environment. See Section 12 for additional Ecological Information.

### **6.3. Methods and material for containment and cleaning up**

Sweep up and shovel into suitable containers for disposal.

### **6.4. Reference to other sections**

Refer to protective measures listed in Sections 8 and 13.

## **SECTION 7: HANDLING AND STORAGE**

### **7.1. Precautions for safe handling**

Wear personal protective equipment/face protection. Ensure adequate ventilation. Avoid contact with skin, eyes or clothing. Avoid ingestion and inhalation.

#### **Hygiene Measures**

# SAFETY DATA SHEET

Sodium lactate solution about 60% w/w

Revision Date 20-Oct-2023

Handle in accordance with good industrial hygiene and safety practice. Keep away from food, drink and animal feeding stuffs. Do not eat, drink or smoke when using this product. Remove and wash contaminated clothing and gloves, including the inside, before re-use. Wash hands before breaks and after work.

## 7.2. Conditions for safe storage, including any incompatibilities

Keep refrigerated. Keep container tightly closed.

Technical Rules for Hazardous Substances (TRGS) 510  
Storage Class (LGK) (Germany)

Class 12

## 7.3. Specific end use(s)

Use in laboratories

## SECTION 8: EXPOSURE CONTROLS/PERSONAL PROTECTION

### 8.1. Control parameters

#### **Exposure limits**

This product, as supplied, does not contain any hazardous materials with occupational exposure limits established by the region specific regulatory bodies

#### **Biological limit values**

This product, as supplied, does not contain any hazardous materials with biological limits established by the region specific regulatory bodies

#### **Derived No Effect Level (DNEL) / Derived Minimum Effect Level (DMEL)**

No information available

#### **Predicted No Effect Concentration (PNEC)**

See values below.

Component	Fresh water	Fresh water sediment	Water Intermittent	Microorganisms in sewage treatment	Soil (Agriculture)
Propanoic acid, 2-hydroxy-, monosodium salt 72-17-3 ( 60 )	PNEC = 1.6mg/L			PNEC = 11mg/L	

### 8.2. Exposure controls

#### **Engineering Measures**

Ensure that eyewash stations and safety showers are close to the workstation location.

#### **Personal protective equipment**

##### **Eye Protection**

Wear safety glasses with side shields (or goggles) (European standard - EN 166)

# SAFETY DATA SHEET

Sodium lactate solution about 60% w/w

Revision Date 20-Oct-2023

<b>Hand Protection</b>		Protective gloves		
<b>Glove material</b>	<b>Breakthrough time</b>	<b>Glove thickness</b>	<b>EU standard</b>	<b>Glove comments</b>
Natural rubber	See manufacturers	-	EN 374	(minimum requirement)
Nitrile rubber	recommendations			
Neoprene				
PVC				

**Skin and body protection** Wear appropriate protective gloves and clothing to prevent skin exposure.

Inspect gloves before use.

Please observe the instructions regarding permeability and breakthrough time which are provided by the supplier of the gloves.  
(Refer to manufacturer/supplier for information)

Ensure gloves are suitable for the task: Chemical compatability, Dexterity, Operational conditions, User susceptibility, e.g. sensitisation effects, also take into consideration the specific local conditions under which the product is used, such as the danger of cuts, abrasion.

Remove gloves with care avoiding skin contamination.

**Respiratory Protection** When workers are facing concentrations above the exposure limit they must use appropriate certified respirators.

**Large scale/emergency use** Use a NIOSH/MSHA or European Standard EN 136 approved respirator if exposure limits are exceeded or if irritation or other symptoms are experienced  
**Recommended Filter type:** Particle filter

**Small scale/Laboratory use** Maintain adequate ventilation

**Environmental exposure controls** No information available.

## SECTION 9: PHYSICAL AND CHEMICAL PROPERTIES

### 9.1. Information on basic physical and chemical properties

<b>Physical State</b>	Viscous liquid	Liquid
<b>Appearance</b>	Light yellow	
<b>Odor</b>	No information available	
<b>Odor Threshold</b>	No data available	
<b>Melting Point/Range</b>	17.2 °C / 63 °F	
<b>Softening Point</b>	No data available	
<b>Boiling Point/Range</b>	140 °C / 284 °F	
<b>Flammability (liquid)</b>	No data available	
<b>Flammability (solid,gas)</b>	Not applicable	Liquid
<b>Explosion Limits</b>	No data available	
<b>Flash Point</b>	Not applicable	<b>Method -</b> No information available
<b>Autoignition Temperature</b>	No data available	
<b>Decomposition Temperature</b>	No data available	
<b>pH</b>	7	
<b>Viscosity</b>	No data available	
<b>Water Solubility</b>	Miscible	
<b>Solubility in other solvents</b>	No information available	
<b>Partition Coefficient (n-octanol/water)</b>		
<b>Vapor Pressure</b>	14 mmHg @ 20 °C	
<b>Density / Specific Gravity</b>	1.33	
<b>Bulk Density</b>	Not applicable	Liquid
<b>Vapor Density</b>	0.7	(Air = 1.0)
<b>Particle characteristics</b>	Not applicable (liquid)	

# SAFETY DATA SHEET

Sodium lactate solution about 60% w/w

Revision Date 20-Oct-2023

## 9.2. Other information

Molecular Formula C<sub>3</sub>H<sub>5</sub>NaO<sub>3</sub>  
Molecular Weight 112.06  
Evaporation Rate > 1 (Ether = 1.0)

## SECTION 10: STABILITY AND REACTIVITY

### 10.1. Reactivity

None known, based on information available

### 10.2. Chemical stability

Stable under normal conditions.

### 10.3. Possibility of hazardous reactions

Hazardous Polymerization Hazardous polymerization does not occur.  
Hazardous Reactions None under normal processing.

### 10.4. Conditions to avoid

Incompatible products. Excess heat.

### 10.5. Incompatible materials

Strong oxidizing agents.

### 10.6. Hazardous decomposition products

Sodium oxides. Carbon monoxide (CO). Carbon dioxide (CO<sub>2</sub>).

## SECTION 11: TOXICOLOGICAL INFORMATION

### 11.1. Information on hazard classes as defined in Regulation (EC) No 1272/2008

#### Product Information

#### (a) acute toxicity;

Oral Based on available data, the classification criteria are not met  
Dermal No data available  
Inhalation No data available

#### Toxicology data for the components

Component	LD50 Oral	LD50 Dermal	LC50 Inhalation
Propanoic acid, 2-hydroxy-, monosodium salt	-	LD50 > 2000 mg/kg ( Rabbit )	LC50 > 7.94 mg/L ( Rat ) 4 h
Water	-	-	-

(b) skin corrosion/irritation; No data available

(c) serious eye damage/irritation; No data available

#### (d) respiratory or skin sensitization;

Respiratory No data available  
Skin No data available



# SAFETY DATA SHEET

Sodium lactate solution about 60% w/w

Revision Date 20-Oct-2023

(e) germ cell mutagenicity;	No data available
(f) carcinogenicity;	No data available There are no known carcinogenic chemicals in this product
(g) reproductive toxicity;	No data available
(h) STOT-single exposure;	No data available
(i) STOT-repeated exposure;	No data available
Target Organs	No information available.
(j) aspiration hazard;	No data available
Symptoms / effects, both acute and delayed	No information available.

## 11.2. Information on other hazards

Endocrine Disrupting Properties	Assess endocrine disrupting properties for human health. This product does not contain any known or suspected endocrine disruptors.
---------------------------------	---

## SECTION 12: ECOLOGICAL INFORMATION

### 12.1. Toxicity

Ecotoxicity effects	Contains no substances known to be hazardous to the environment or that are not degradable in waste water treatment plants.
---------------------	---

### 12.2. Persistence and degradability

Persistence	Miscible with water, Persistence is unlikely, based on information available.
-------------	---

<u>12.3. Bioaccumulative potential</u>	Bioaccumulation is unlikely
--	-----------------------------

<u>12.4. Mobility in soil</u>	The product is water soluble, and may spread in water systems. Will likely be mobile in the environment due to its water solubility. Highly mobile in soils
-------------------------------	---

<u>12.5. Results of PBT and vPvB assessment</u>	No data available for assessment.
---	-----------------------------------

### 12.6. Endocrine disrupting properties

Endocrine Disruptor Information	This product does not contain any known or suspected endocrine disruptors
---------------------------------	---

### 12.7. Other adverse effects

# SAFETY DATA SHEET

Sodium lactate solution about 60% w/w

Revision Date 20-Oct-2023

**Persistent Organic Pollutant**  
**Ozone Depletion Potential**

This product does not contain any known or suspected substance  
This product does not contain any known or suspected substance

## SECTION 13: DISPOSAL CONSIDERATIONS

### 13.1. Waste treatment methods

**Waste from Residues/Unused Products**

Chemical waste generators must determine whether a discarded chemical is classified as a hazardous waste. Consult local, regional, and national hazardous waste regulations to ensure complete and accurate classification.

**Contaminated Packaging**

Empty remaining contents. Dispose of in accordance with local regulations. Do not re-use empty containers.

**European Waste Catalogue (EWC)**

According to the European Waste Catalog, Waste Codes are not product specific, but application specific.

**Other Information**

Waste codes should be assigned by the user based on the application for which the product was used.

## SECTION 14: TRANSPORT INFORMATION

**IMDG/IMO**

Not regulated

**14.1. UN number**

**14.2. UN proper shipping name**

**14.3. Transport hazard class(es)**

**14.4. Packing group**

**ADR**

Not regulated

**14.1. UN number**

**14.2. UN proper shipping name**

**14.3. Transport hazard class(es)**

**14.4. Packing group**

**IATA**

Not regulated

**14.1. UN number**

**14.2. UN proper shipping name**

**14.3. Transport hazard class(es)**

**14.4. Packing group**

**14.5. Environmental hazards**

No hazards identified

**14.6. Special precautions for user**

No special precautions required.

**14.7. Maritime transport in bulk according to IMO instruments**

Not applicable, packaged goods

## SECTION 15: REGULATORY INFORMATION

**15.1. Safety, health and environmental regulations/legislation specific for the substance or mixture**

# SAFETY DATA SHEET

Sodium lactate solution about 60% w/w

Revision Date 20-Oct-2023

## International Inventories

Europe (EINECS/ELINCS/NLP), China (IECSC), Taiwan (TCSI), Korea (KECL), Japan (ENCS), Japan (ISHL), Canada (DSL/NDSL), Australia (AICS), New Zealand (NZIoC), Philippines (PICCS). US EPA (TSCA) - Toxic Substances Control Act, (40 CFR Part 710)

Component	CAS No	EINECS	ELINCS	NLP	IECSC	TCSI	KECL	ENCS	ISHL
Propanoic acid, 2-hydroxy-, monosodium salt	72-17-3	200-772-0	-	-	X	X	KE-20862	X	X
Water	7732-18-5	231-791-2	-	-	X	X	KE-35400	X	-

Component	CAS No	TSCA	TSCA Inventory notification - Active-Inactive	DSL	NDSL	AICS	NZIoC	PICCS
Propanoic acid, 2-hydroxy-, monosodium salt	72-17-3	X	ACTIVE	X	-	X	X	X
Water	7732-18-5	X	ACTIVE	X	-	X	X	X

Legend: X - Listed '-' - Not Listed

KECL - NIER number or KE number (<http://ncis.nier.go.kr/en/main.do>)

## Authorisation/Restrictions according to EU REACH

Not applicable

Component	CAS No	REACH (1907/2006) - Annex XIV - Substances Subject to Authorization	REACH (1907/2006) - Annex XVII - Restrictions on Certain Dangerous Substances	REACH Regulation (EC 1907/2006) article 59 - Candidate List of Substances of Very High Concern (SVHC)
Propanoic acid, 2-hydroxy-, monosodium salt	72-17-3	-	-	-
Water	7732-18-5	-	-	-

## Seveso III Directive (2012/18/EC)

Component	CAS No	Seveso III Directive (2012/18/EC) - Qualifying Quantities for Major Accident Notification	Seveso III Directive (2012/18/EC) - Qualifying Quantities for Safety Report Requirements
Propanoic acid, 2-hydroxy-, monosodium salt	72-17-3	Not applicable	Not applicable
Water	7732-18-5	Not applicable	Not applicable

## Regulation (EC) No 649/2012 of the European Parliament and of the Council of 4 July 2012 concerning the export and import of dangerous chemicals

Not applicable

## Contains component(s) that meet a 'definition' of per & poly fluoroalkyl substance (PFAS)?

Not applicable

Take note of Directive 98/24/EC on the protection of the health and safety of workers from the risks related to chemical agents at work .

## National Regulations

UK - Take note of Control of Substances Hazardous to Health Regulations (COSHH) 2002 and 2005 Amendment

## WGK Classification

Water endangering class = non-hazardous to waters (self classification)

# SAFETY DATA SHEET

Sodium lactate solution about 60% w/w

Revision Date 20-Oct-2023

## 15.2. Chemical safety assessment

Chemical Safety Assessment/Reports (CSA/CSR) are not required for mixtures

## SECTION 16: OTHER INFORMATION

### Full text of H-Statements referred to under sections 2 and 3

#### Legend

**CAS** - Chemical Abstracts Service

**EINECS/ELINCS** - European Inventory of Existing Commercial Chemical Substances/EU List of Notified Chemical Substances

**PICCS** - Philippines Inventory of Chemicals and Chemical Substances

**IECSC** - Chinese Inventory of Existing Chemical Substances

**KECL** - Korean Existing and Evaluated Chemical Substances

**TSCA** - United States Toxic Substances Control Act Section 8(b) Inventory

**DSL/NDSL** - Canadian Domestic Substances List/Non-Domestic Substances List

**ENCS** - Japanese Existing and New Chemical Substances

**AICS** - Australian Inventory of Chemical Substances

**NZIoC** - New Zealand Inventory of Chemicals

**WEL** - Workplace Exposure Limit

**ACGIH** - American Conference of Governmental Industrial Hygienists

**DNEL** - Derived No Effect Level

**RPE** - Respiratory Protective Equipment

**LC50** - Lethal Concentration 50%

**NOEC** - No Observed Effect Concentration

**PBT** - Persistent, Bioaccumulative, Toxic

**TWA** - Time Weighted Average

**IARC** - International Agency for Research on Cancer  
Predicted No Effect Concentration (PNEC)

**LD50** - Lethal Dose 50%

**EC50** - Effective Concentration 50%

**POW** - Partition coefficient Octanol:Water

**vPvB** - very Persistent, very Bioaccumulative

**ADR** - European Agreement Concerning the International Carriage of Dangerous Goods by Road

**IMO/IMDG** - International Maritime Organization/International Maritime Dangerous Goods Code

**OECD** - Organisation for Economic Co-operation and Development

**BCF** - Bioconcentration factor

#### Key literature references and sources for data

<https://echa.europa.eu/information-on-chemicals>

Suppliers safety data sheet, Chemadviser - LOLI, Merck index, RTECS

**ICAO/IATA** - International Civil Aviation Organization/International Air Transport Association

**MARPOL** - International Convention for the Prevention of Pollution from Ships

**ATE** - Acute Toxicity Estimate

**VOC** - (Volatile Organic Compound)

### Classification and procedure used to derive the classification for mixtures according to Regulation (EC) 1272/2008 [CLP]:

**Physical hazards** On basis of test data

**Health Hazards** Calculation method

**Environmental hazards** Calculation method

#### Training Advice

Chemical hazard awareness training, incorporating labelling, Safety Data Sheets (SDS), Personal Protective Equipment (PPE) and hygiene.

**Creation Date** 12-May-2011

**Revision Date** 20-Oct-2023

**Revision Summary** Not applicable.

**This safety data sheet complies with Regulation UK SI 2019/758 and UK SI 2020/1577 as amended.**

#### Disclaimer

The information provided in this Safety Data Sheet is correct to the best of our knowledge, information and belief at the date of its publication. The information given is designed only as a guidance for safe handling, use, processing, storage,

# **SAFETY DATA SHEET**

Sodium lactate solution about 60% w/w

Revision Date 20-Oct-2023

---

transportation, disposal and release and is not to be considered a warranty or quality specification. The information relates only to the specific material designated and may not be valid for such material used in combination with any other materials or in any process, unless specified in the text

**End of Safety Data Sheet**