

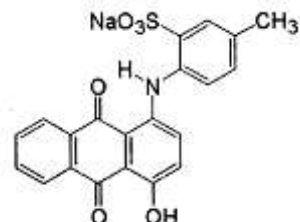
## TECHNICAL DATA SHEET

### Water-Based Dye Purple

#### DEFINITION

Chemical name sodium;2-[(4-hydroxy-9,10-dioxoanthracen-1-yl)amino]-5-methylbenzenesulfonate

INCI Name CI 60730  
COLOUR INDEX 60730  
CAS Nr 4430-18-6  
EINECS Nr 224-618-7



#### REGULATIONS

EU Cosmetic Directive Annex IV, Part 1, Cat 3  
Food Directive -----  
FDA Ext DC Violet 2  
JAPAN III Violet 401  
CHINA Hygienic standard for cosmetics : Cat 3

Pure dye content	80% Min.
Water insoluble matter	0.4 Max.
Volatile matter	10% Max.
Chlorides and sulfates (as Na salts)	15% Max.
Heavy metals :	
Arsenic	< 2 ppm
Lead	< 20 ppm
Manganese	< 50 ppm
Chromium	< 50 ppm
Mercury	< 1 ppm
Cadmium	< 1 ppm

#### CHEMICAL & PHYSICAL PROPERTIES

Aspect	Bluish violet powder
Maximum absorption	568 (+- 5)
Fastness to acids	Good
Fastness to alcali	Good
Fastness to light	Good

**FIELDS OF USE :** All water based cosmetic products such as skin care, hair care, toiletries

## Water-Based Dye Purple

### SECTION 1: Identification of the substance/mixture and of the company/undertaking

#### 1.1 - Product identifier

Trade name/designation	Cosmetische kleurstof - waterbasis - violet / Cosmetic colorant - water based - violet - - KCW10				
Chemical name	sodium 4-[(9,10-dihydro-4-hydroxy-9,10-dioxo-1-anthryl)amino]toluene-3-sulphonate				
Product-type	Substance				
Product code	NC 352				
Index No.	EC No.	224-618-7	CAS No.	4430-18-6	

#### 1.2 - Relevant identified uses of the substance or mixture and uses advised against Cosmetic products

#### 1.3 - Details of the supplier of the safety data sheet

**Company :** Youwish  
**Address :** Transistorstraat 91-021, 322CL, Almere, The Netherlands  
www.youwish.nl / contact@youwish.nl  
**Telephone :** +31 36 2036384

#### 1.4 - Emergency telephone number

**Nederland :** National Poisoning Information Center - Bilthoven  
TEL: +31(0)88 755 8000 (Only for the purpose of informing medical personnel in cases of acute intoxications)

### SECTION 2: Hazards identification

#### 2.1 - Classification of the substance or mixture

Classification according to Regulation (EC) No 1272/2008 [CLP]

Eye Dam. 1	Serious eye damage, Category 1
Aquatic Chronic 3	Hazardous to the aquatic environment - Aquatic Chronic 3

#### 2.2 - Label elements

Labelling according to Regulation (EC) No. 1272/2008 [CLP]

Signal word : Danger

Hazard pictograms



Hazard statements

H318	Causes serious eye damage
H412	Harmful to aquatic life with long lasting effects

Precautionary statements

P273	Avoid release to the environment.
P280	Wear protective gloves, protective clothing, eye protection, face protection, Face protection shield.

## Water-Based Dye Purple

P305+P351+P338	IF IN EYES: Rinse cautiously with water for several minutes. Remove contact lenses, if present and easy to do. Continue rinsing.
P310	Immediately call a POISON CENTER, a doctor.
P501	Dispose of container in an approved treatment center.

EUH-phrases : None

### 2.3 - Other hazards

PBT-substance. - This substance does not meet the PBT/vPvB criteria of REACH, Annex XIII.

vPvB-substance. - This substance does not meet the PBT/vPvB criteria of REACH, Annex XIII.

Other hazards which do not result in classification - No information available.

## SECTION 3: Composition / information on ingredients

### 3.1 - Substances

Chemical name	No	%	Class	Spec. concentrations
sodium 4-[(9,10-dihydro-4-hydroxy-9,10-dioxo-1-anthryl)amino]toluene-3-sulphonate	CAS No. : 4430-18-6 Index No. : EC No. : 224-618-7	100	Aquatic Chronic 3 - H412 Eye Dam. 1 - H318	Not applicable

### 3.2 - Mixtures

Not applicable

## SECTION 4: First aid measures

### 4.1 - Description of first aid measures

Following inhalation - No special measures are necessary.  
- Provide fresh air.

Following skin contact - Wash immediately with: Water  
- When in doubt or if symptoms are observed, get medical advice.

After eye contact - In case of contact with eyes flush immediately with plenty of flowing water for 10 to 15 minutes holding eyelids apart and consult an ophthalmologist.

After ingestion - Rinse mouth thoroughly with water.  
- Do NOT induce vomiting.

### 4.2 - Most important symptoms and effects, both acute and delayed

Symptoms and effects - Following inhalation - No information available.

Symptoms and effects - Following skin contact - No information available.

Symptoms and effects - After eye contact - Serious eye damage/eye irritation

Symptoms and effects - After ingestion - No information available.

### 4.3 - Indication of any immediate medical attention and special treatment needed

---

## Water-Based Dye Purple

---

---

### SECTION 5: Firefighting measures

---

#### 5.1 - Extinguishing media

##### Suitable extinguishing media

- ABC-powder
- Carbon dioxide (CO<sub>2</sub>)
- Foam
- Extinguishing powder

##### Unsuitable extinguishing media

- Full water jet

#### 5.2 - Special hazards arising from the substance or mixture

##### Special hazards arising from the substance or mixture

- No information available.

#### 5.3 - Advice for firefighters

- Co-ordinate fire-fighting measures to the fire surroundings.

---

### SECTION 6: Accidental release measures

---

#### 6.1 - Personal precautions, protective equipment and emergency procedures

##### For non-emergency personnel

- Use personal protection equipment.

##### For emergency responders

- No information available.

#### 6.2 - Environmental precautions

- No information available.

#### 6.3 - Methods and material for containment and cleaning up

##### Methods and material for containment

- No information available.

##### Methods and material for cleaning up

- Take up mechanically.
- Wash with plenty of water.

##### Inappropriate techniques

- No information available.

#### 6.4 - Reference to other sections

- Disposal: see section 13
- Personal protection equipment: see section 8

---

### SECTION 7: Handling and storage

---

#### 7.1 - Precautions for safe handling

##### Recommendation

- Avoid: Eye contact
- Avoid: Generation/formation of dust
- It is recommended to design all work processes always so that the following is excluded: Eye contact

##### Advices on general occupational hygiene

- No information available.

#### 7.2 - Conditions for safe storage, including any incompatibilities

## Water-Based Dye Purple

- Keep container tightly closed in a cool, well-ventilated place.

### 7.3 - Specific end use(s)

- Apart from the uses mention in section 1.2 no other specific uses are stipulated

## SECTION 8: Exposure controls/personal protection

### 8.1 - Control parameters

### 8.2 - Exposure controls

Appropriate engineering controls

- No information available.

Individual protection measures, such as personal protective equipment

- Suitable eye protection: Dust protection eye glasses

- Suitable protective clothing: lab coat

- When handling with chemical substances, protective gloves must be worn with the CE-label including the four control digits.

- Suitable respiratory protection apparatus: Self-contained respirator (breathing apparatus) (DIN EN 133)



## SECTION 9: Physical and chemical properties

### 9.1 - Information on basic physical and chemical properties

<u>Physical state</u>	<u>Solid</u>	<u>Appearance</u>	<u>Powder</u>
<u>Colour</u>	dark violet	<u>Odour</u>	odourless
Odour threshold		No data available	
pH		No data available	
Melting point		142 °C < V < 143 °C	
Freezing point		No data available	
Boiling point		No data available	
Flash point		No data available	
Evaporation rate		No data available	
flammability		No data available	
Lower explosion limit		No data available	
Upper explosion limit		No data available	
Vapour pressure		No data available	
Vapour density		No data available	
Relative density		1,373	

## Water-Based Dye Purple

Density	No data available
Solubility (Water)	No data available
Solubility (Ethanol)	No data available
Solubility (Acetone)	No data available
Solubility (Organic solvents)	No data available
Log KOC	No data available
Auto-ignition temperature	No data available
Decomposition temperature	No data available
Kinematic viscosity	No data available
Dynamic viscosity	No data available

### 9.2 - Other information

VOC content	No data available
Minimum ignition energy	No data available
Conductivity	No data available

## SECTION 10: Stability and reactivity

### 10.1 - Reactivity

- This material is considered to be non-reactive under normal use conditions.

### 10.2 - Chemical stability

- The product is chemically stable under recommended conditions of storage, use and temperature.

### 10.3 - Possibility of hazardous reactions

- No hazardous reaction when handled and stored according to provisions.

### 10.4 - Conditions to avoid

- No information available.

### 10.5 - Incompatible materials

- No information available.

### 10.6 - Hazardous decomposition products

- Does not decompose when used for intended uses.

## SECTION 11: Toxicological information

### 11.1 - Information on toxicological effects

#### Acute toxicity

- Not classified

LD50 oral (rat)	No data available
LD50 dermal (rat)	No data available
LD50 dermal (rabbit)	No data available
LC50 inhalation (rat)	No data available
LC50 inhalation dusts and mists (rat)	No data available
LC50 inhalation vapours (rat)	No data available

## Water-Based Dye Purple

	- No information available.
<u>Skin corrosion/irritation</u>	- Not classified
	- No information available.
<u>Serious eye damage/eye irritation</u>	- Serious eye damage, Category 1 - Causes serious eye damage
	- Causes serious eye irritation.
<u>Respiratory or skin sensitisation</u>	- Not classified
	- No information available.
<u>Germ cell mutagenicity</u>	- Not classified
	- No information available.
<u>Carcinogenicity</u>	- Not classified
	- No information available.
<u>Reproductive toxicity</u>	- Not classified
	- No information available.
<u>STOT-single exposure</u>	- Not classified
	- No information available.
<u>STOT-repeated exposure</u>	- Not classified
	- No information available.
<u>Aspiration hazard</u>	- Not classified

## SECTION 12: Ecological information

### 12.1 - Toxicity

EC50 48 hr crustacea	No data available
LC50 96 hr fish	No data available
ErC50 algae	No data available
ErC50 other aquatic plants	No data available
NOEC chronic fish	No data available
NOEC chronic crustacea	No data available
NOEC chronic algae	No data available
NOEC chronic other aquatic plants	No data available

- Harmful to aquatic life with long lasting effects.

### 12.2 - Persistence and degradability

Biochemical oxygen demand (BOD)	No data available
Chemical oxygen demand (COD)	No data available
% of biodegradation in 28 days	No data available

- No information available.

### 12.3 - Bioaccumulative potential

## Water-Based Dye Purple

Bioconcentration factor (BCF)	No data available
Log KOC	No data available

- No indication of bioaccumulation potential.

### 12.4 - Mobility in soil

- No information available.

### 12.5 - Results of PBT and vPvB assessment

- This substance does not meet the PBT/vPvB criteria of REACH, Annex XIII.

- This substance does not meet the PBT/vPvB criteria of REACH, Annex XIII.

### 12.6 - Other adverse effects

- No information available.

## SECTION 13: Disposal considerations

### 13.1 - Waste treatment methods

Waste treatment methods - Dispose of waste according to applicable legislation.

Sewage disposal - No information available.

Special precautions for waste treatment - No information available.

Community or national or regional provisions - No information available.

## SECTION 14: Transport information

### 14.1 - UN number

Not applicable

### 14.2 - UN proper shipping name

### 14.3 - Transport hazard class(es)

### 14.4 - Packing group

### 14.5 - Environmental hazards

### 14.6 - Special precautions for user

### 14.7 - Transport in bulk according to Annex II of MARPOL 73/78 and the IBC Code

## SECTION 15: Regulatory information

### 15.1 - Safety, health and environmental regulations/legislation specific for the substance or mixture

Substances REACH candidates None

Substances Annex XIV None

Substances Annex XVII None

VOC content No data available



## Water-Based Dye Purple

### 15.2 - Chemical Safety Assessment

Chemical safety assessment carried out for the product - No information available.

### SECTION 16: Other information

#### SDS versions

Version	Issue date	Description of the amendments
1	27/07/2020	

#### Texts of the regulatory sentences

Aquatic Chronic 3	Hazardous to the aquatic environment - Aquatic Chronic 3
Eye Dam. 1	Serious eye damage, Category 1
H318	Causes serious eye damage
H412	Harmful to aquatic life with long lasting effects

\*\*\* \*\*

The data contained in this safety sheet are based on our current knowledge and experience and describe the product only with regard to safety requirements. This safety data sheet is neither a Certificate of Analysis (CoA) nor technical data sheet do neither represent an agreement on the corresponding contractual quality of the substance/mixture nor a contractually designated use. It is the responsibility of the recipient of the product to ensure any proprietary rights and existing laws and legislation are observed

## STATEMENT

***Youwish declares that the Water-Based Dye Purple:***

- *Are suitable for cosmetic applications and are not on the list of prohibited substances in cosmetic.*
- *Not derived / produced from a raw material that has been genetically modified.*
- *Not classified as carcinogenic, mutagenic or toxic according to regulation 1272/2008.*
- *Not tested on animals and do not contain animal products or derivatives of animal products.*
- *No production uses child labor.*