

TYPICAL GC STATEMENT

PRODUCT NAME: **ANISEED, ESSENTIAL OIL**

PRODUCT CODE: K0026

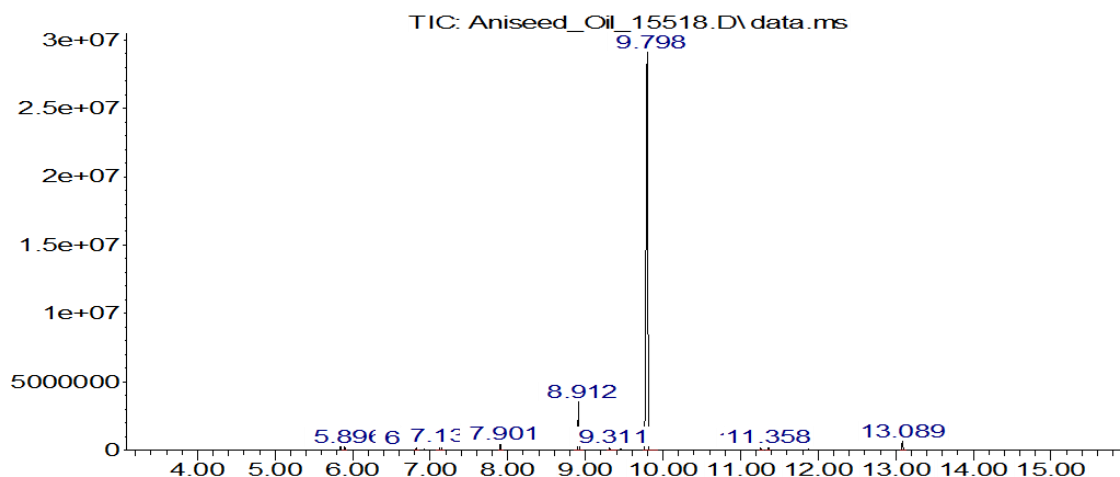
METHOD DETAILS:

CARRIER GAS: **HELIUM**

COLUMN: **RESTEK RXI- 1MS 30M x 0.25MM x 0.25 µM**

DETECTOR: **MS, FULL SCAN 50-500AMU**

Abundance



Peak	RT Mins	Compound	Area	Peak start	Peak end	%
1	5.896	<i>α</i> -Pinene	317256	5.854	5.932	0.5
2	6.818	<i>α</i> -Phellandrene	205795	6.787	6.865	0.4
3	7.139	<i>d</i> -Limonene	590848	7.077	7.191	1.0
4	7.901	Linalool	474615	7.875	7.948	0.8
5	8.912	Estragole (Methyl Chavicol)	3482098	8.855	8.979	6.0
6	9.311	<i>p</i> -Anisaldehyde	270202	9.28	9.414	0.5
7	9.798	<i>trans</i> -Anethole	48532746	9.741	9.943	83.8
8	11.259	<i>β</i> -Caryophyllene	194384	11.233	11.301	0.3
9	11.358	<i>trans</i> - <i>α</i> -Bergamotene	288033	11.327	11.389	0.5
10	13.089	Foeniculin	681505	13.058	13.135	1.2